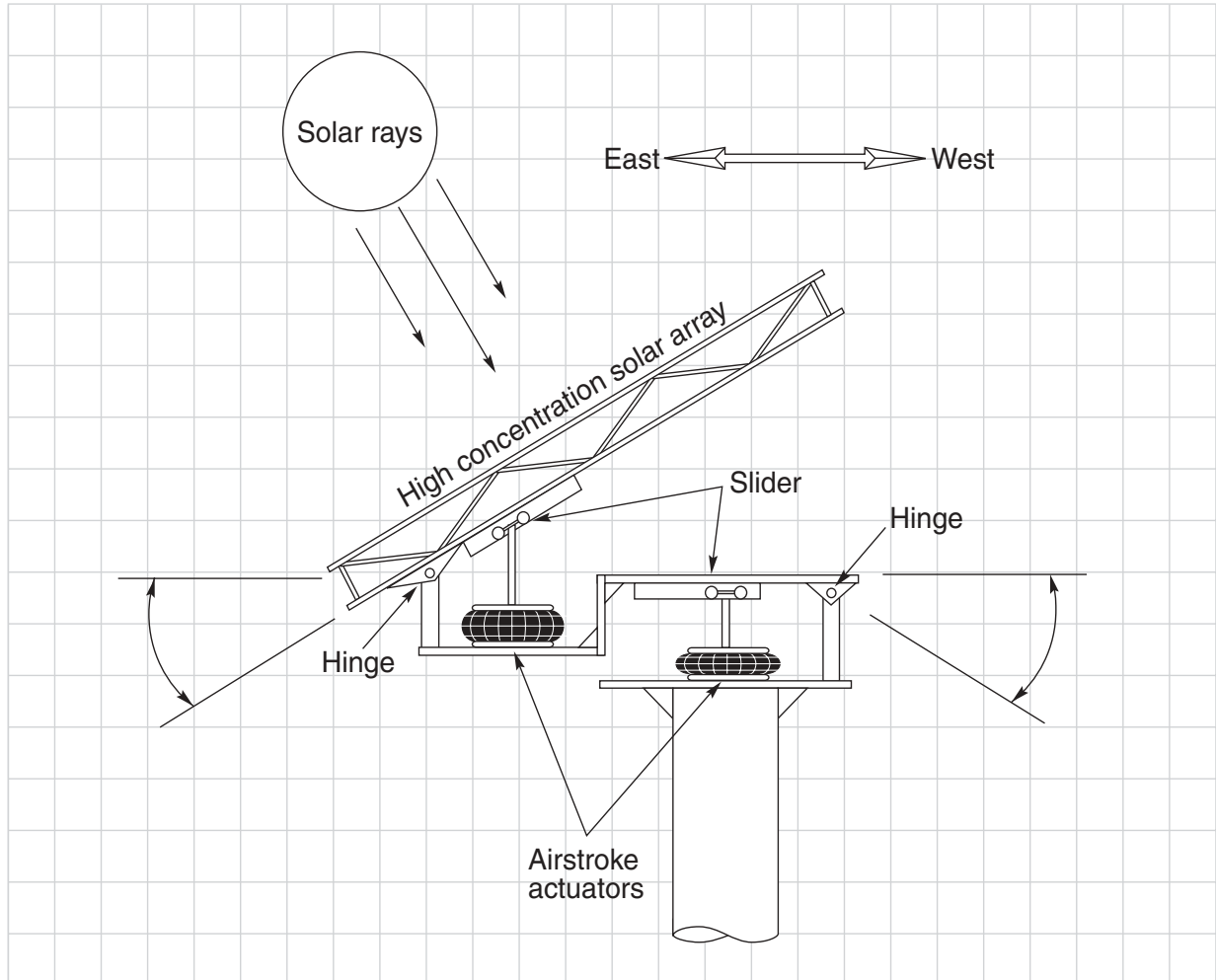


Solar Tracker



Problem

Stationary solar collection panels were inefficient as the sun moved toward, or away from a 90 degree angle position in relation to the panels.

Solution

Two Airstroke actuators are used to adjust the angle of the collection panels, permitting accurate solar tracking. Pneumatic circuit and accumulator controls the actuators.

Benefit

The collector's electrical output is increased. Airstroke actuator's long, powerful stroke provides optimum range of motion, providing durable performance in harsh desert climate.